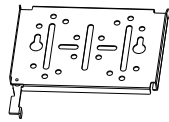
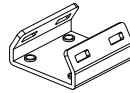


B-SM10 Kit - A-side x 1



B-SM10 Kit - B-side x 1



B-SM10 Kit -
Mini Pole Bracket x 1



X8

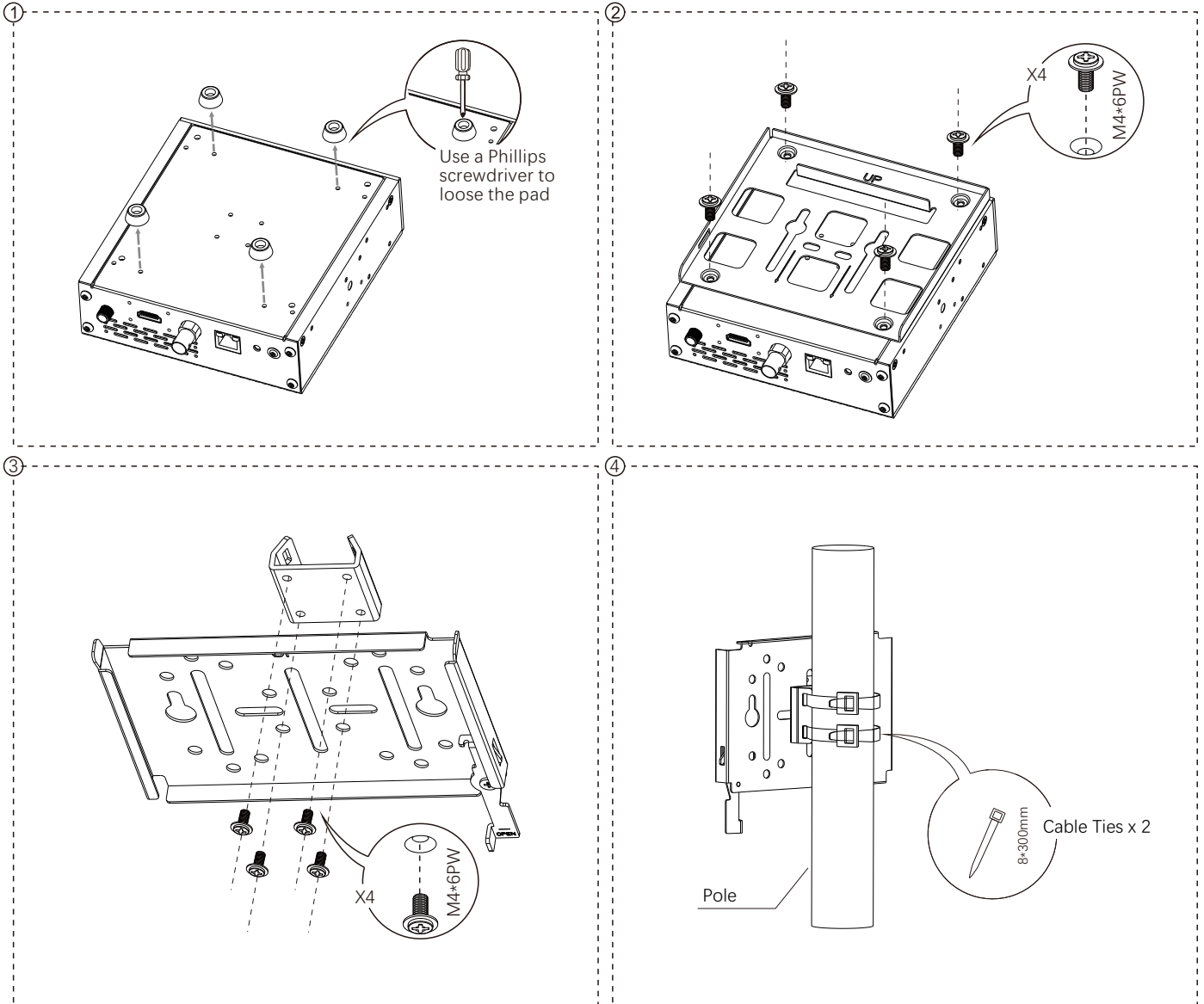


X4

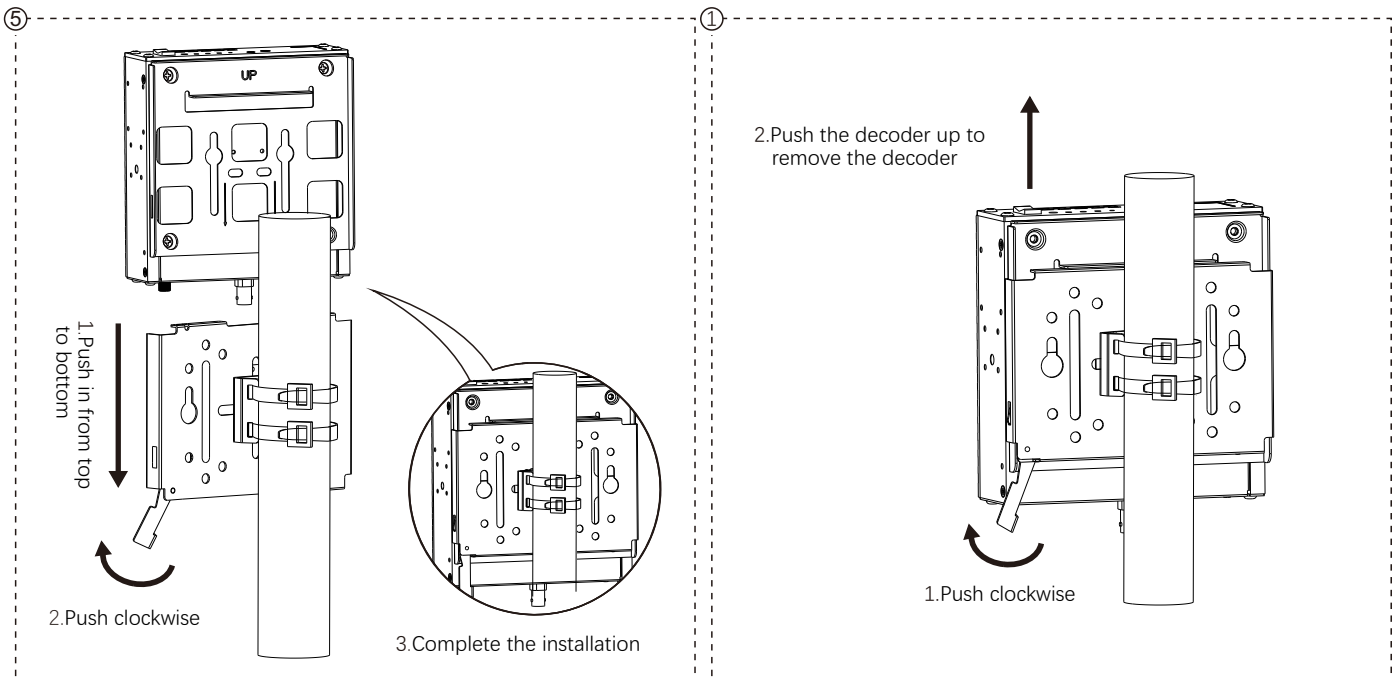


Cable Ties x 4

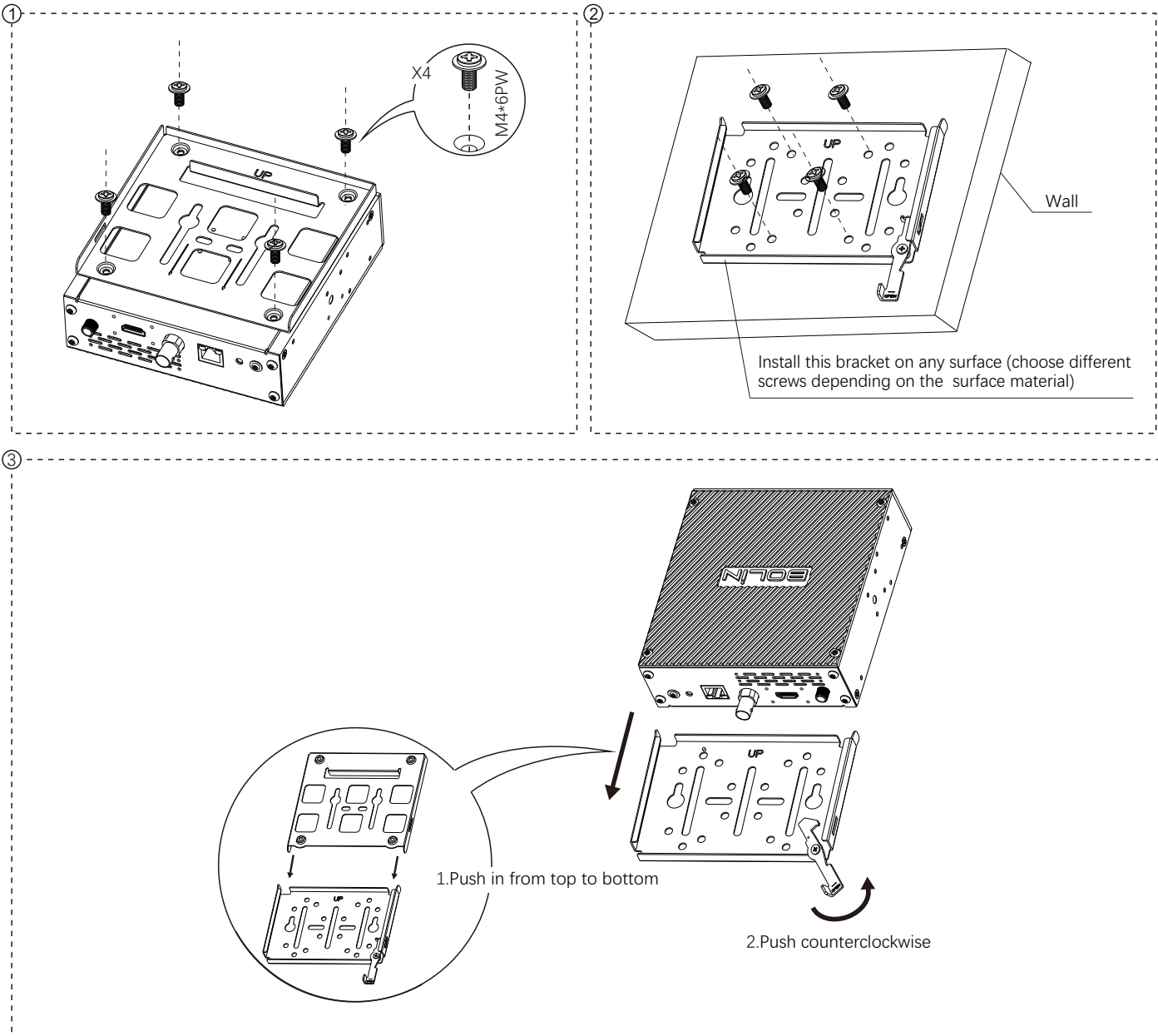
Back-Mounted Pole Mounting



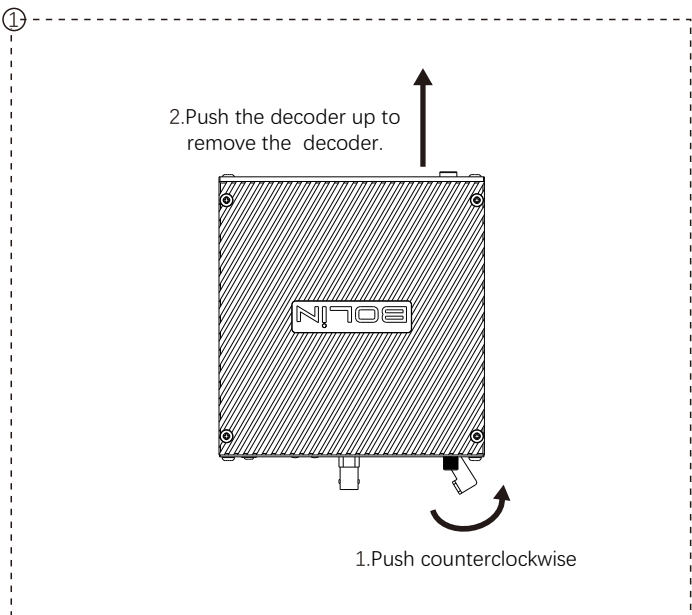
Remove the Decoder

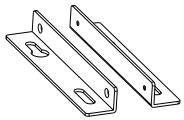


Back-Mounted Surface Mounting



Remove the Decoder





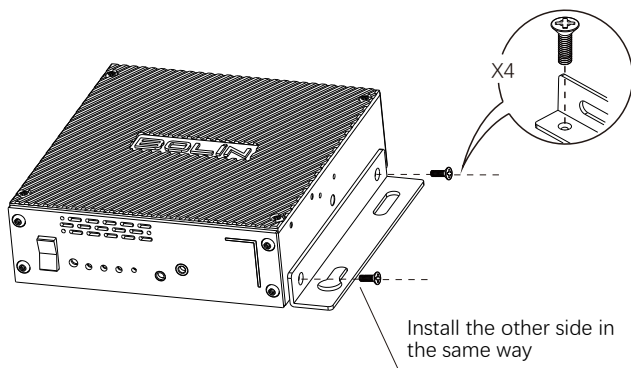
B-BM10 x 1



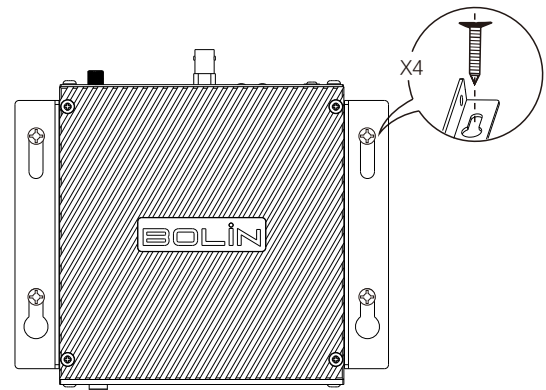
X4

B-BM10 Bracket Mounting

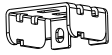
①



②



Note: Please use self-tapping screws to secure (self-tapping screws are not included)

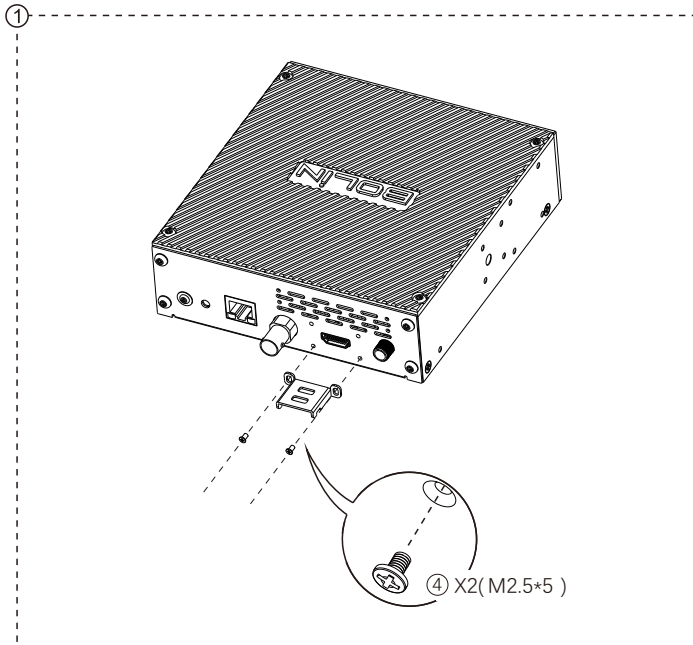


HDMI Cable Secure Mount x 1



X2

HDMI Cable Secure Mount Installation Method 1



HDMI Cable Secure Mount Installation Method 2

