

C-WM2B x1
Wall Bracket



M3*6PW x3
Included with Camera
Purchased



M4*8PW x3
Included with Camera
Purchased
(Backup)



1/4-20UNC x1
Included with Bracket
Purchased



Φ4*Φ14*4mm
3M adhesive pad
Included with Camera
Purchased



M3*10PW x3
Included with Camera
Purchased



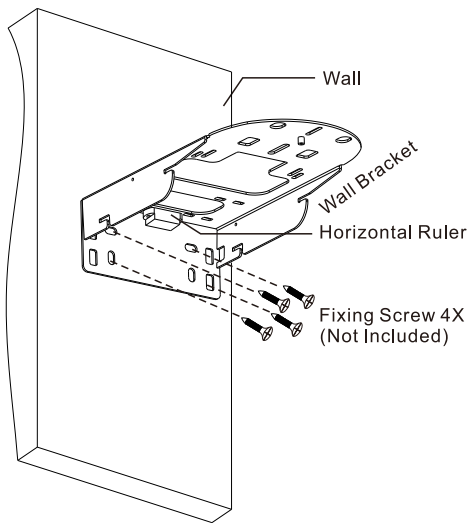
M4*10PW x3
Included with Camera
Purchased
(Backup)



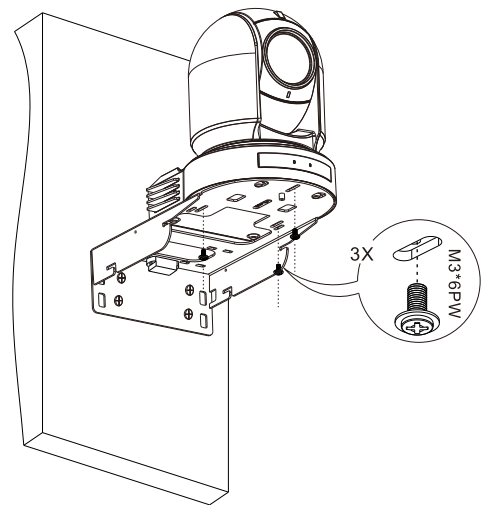
Cable Ties x 3
For securing cables and power adapter
(Backup)

7 Series Camera Installation Diagram (Please refer to next page for installation of BC7)

1

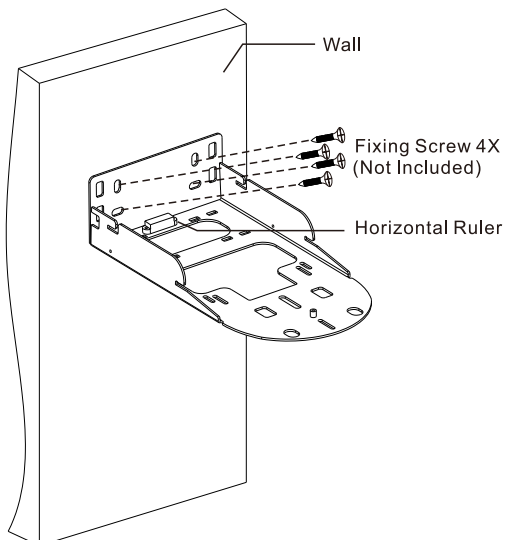


2

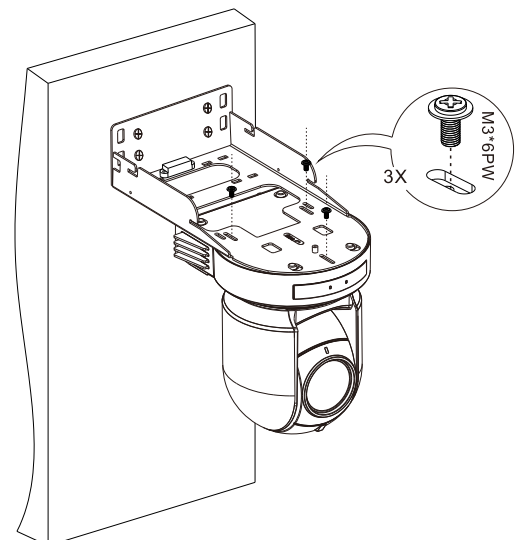


7 Series Camera Hoisting Diagram(Please refer to next page for installation of BC7)

1

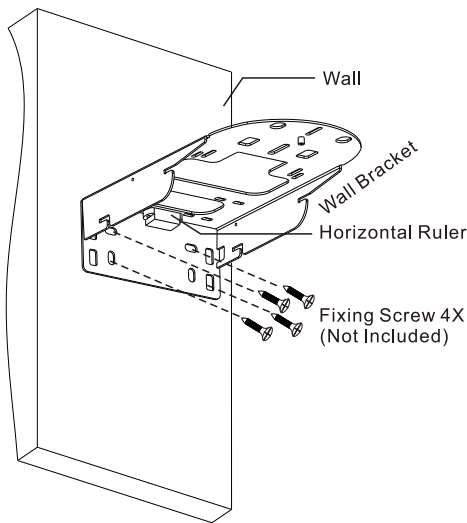


2

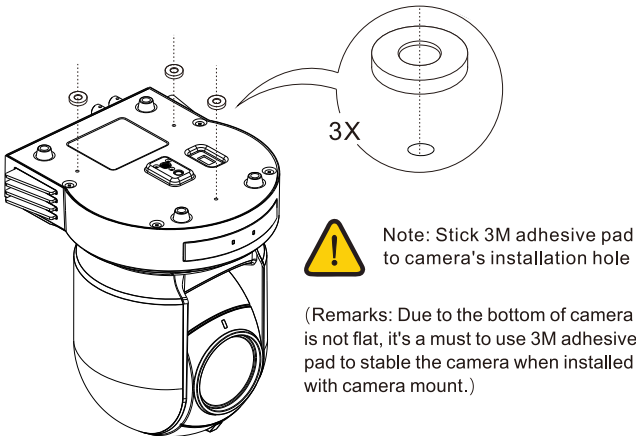


BC 7 Camera Installation Diagram

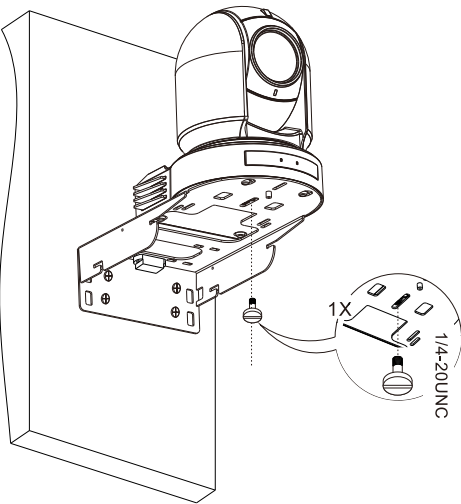
1



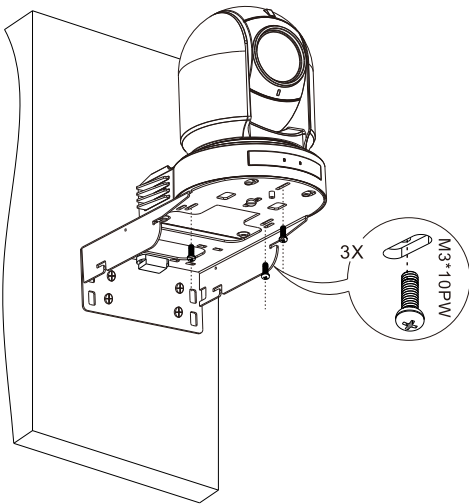
2



3

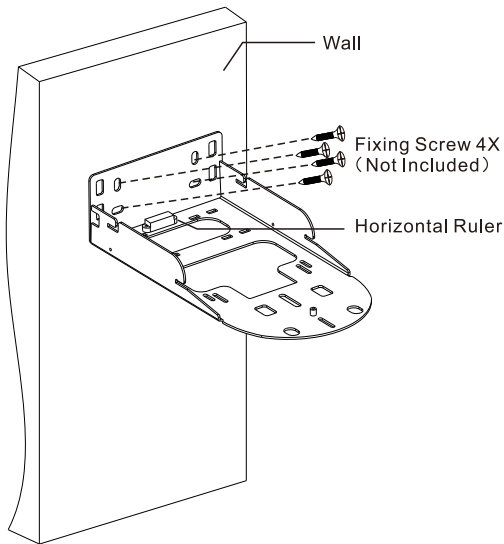


4

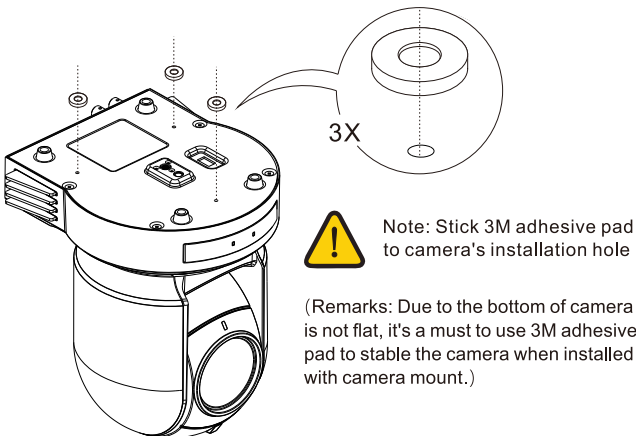


BC 7 Camera Hoisting Diagram

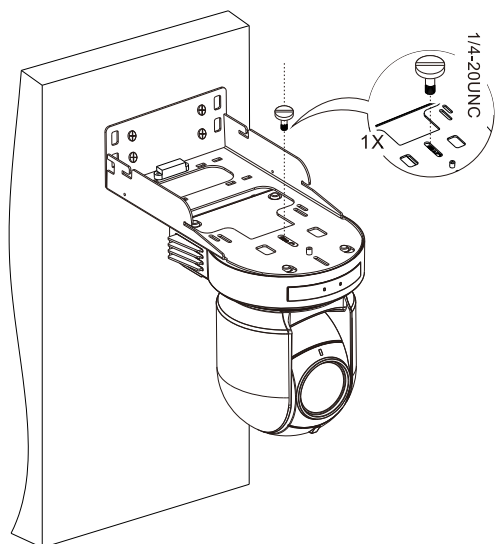
1



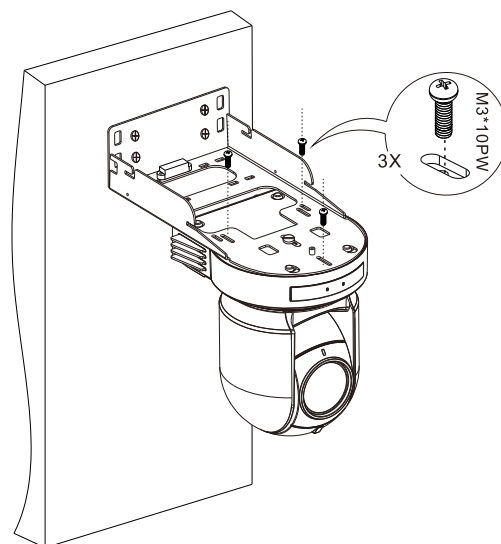
2



3

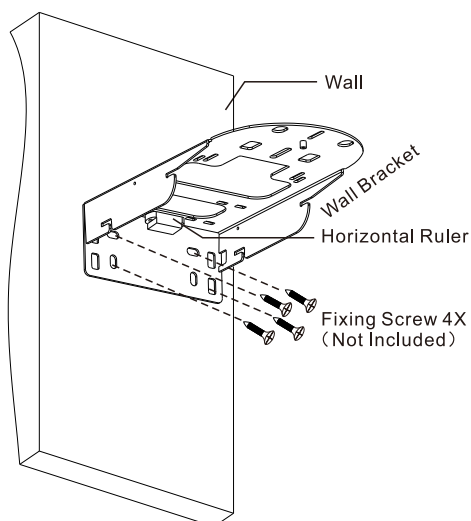


4

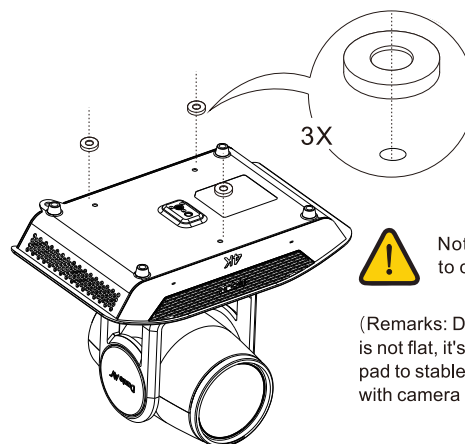


D Series Camera Installation Diagram

1



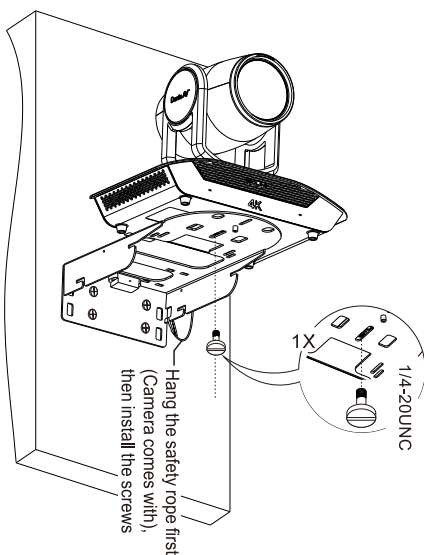
2



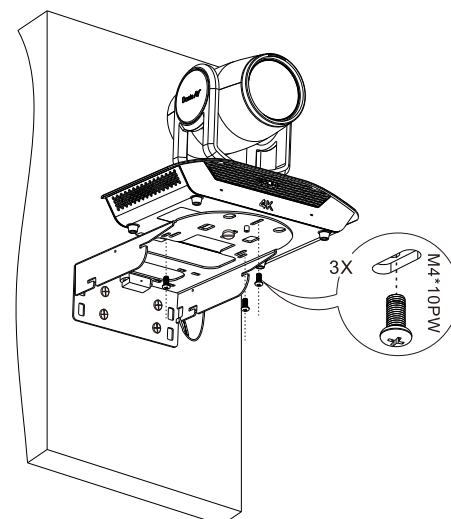
Note: Stick 3M adhesive pad to camera's installation hole

(Remarks: Due to the bottom of camera is not flat, it's a must to use 3M adhesive pad to stable the camera when installed with camera mount.)

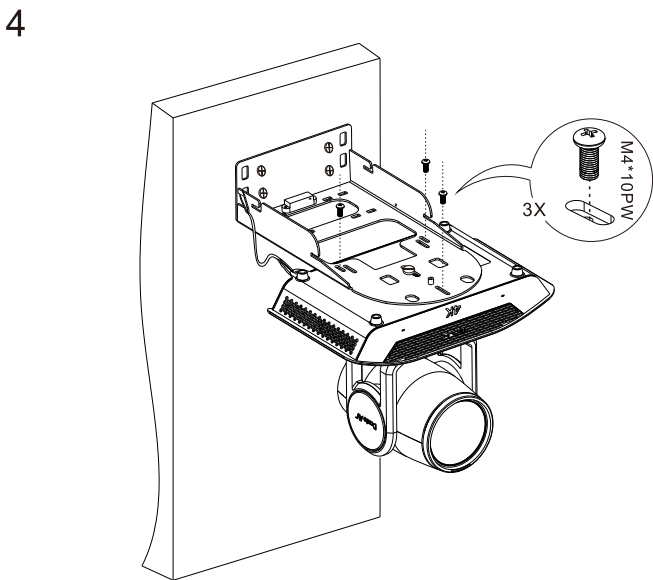
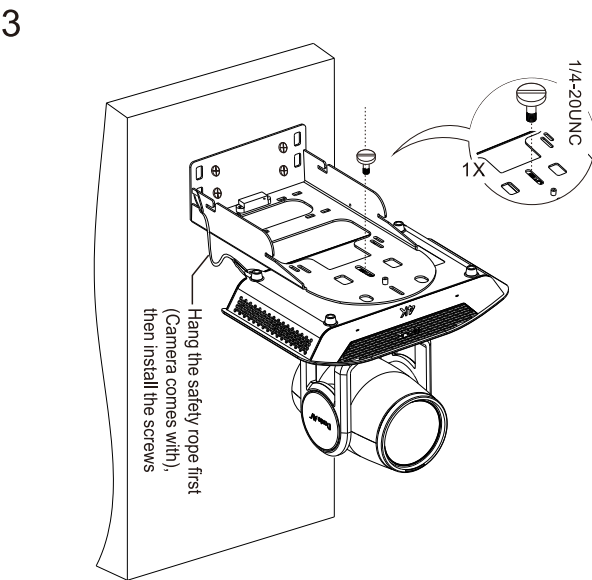
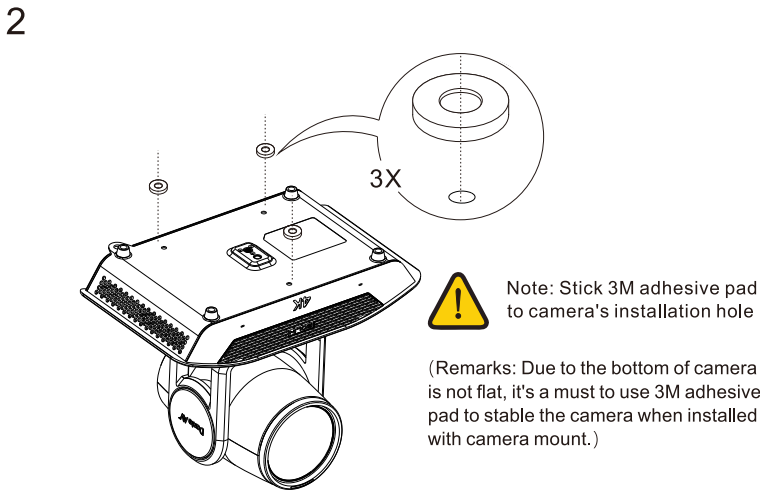
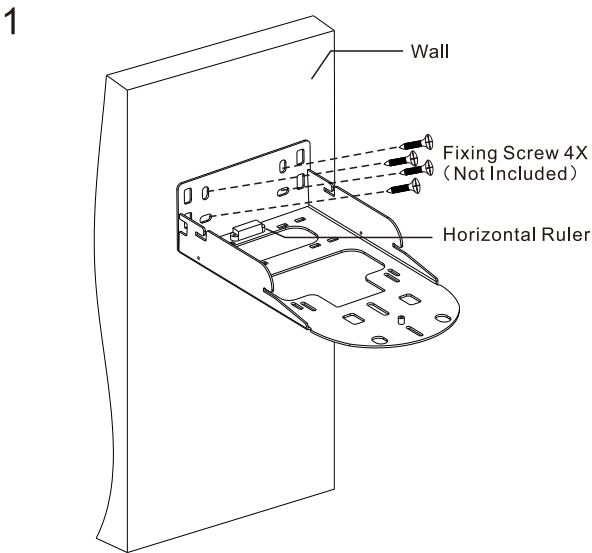
3



4

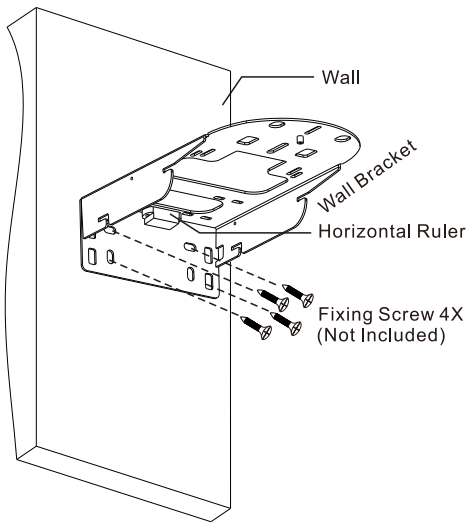


D Series Camera Hoisting Diagram

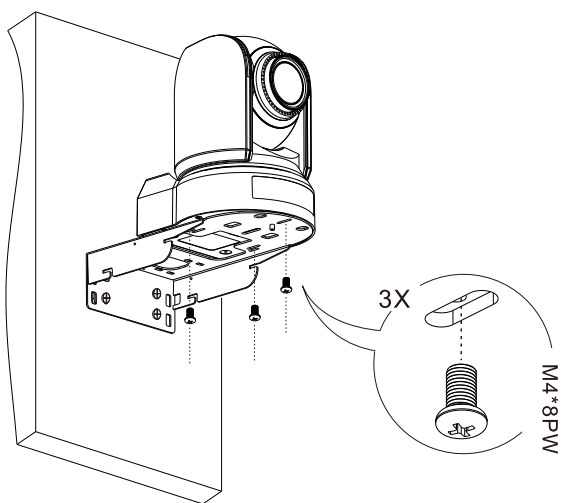


B9 / BC9 Camera Installation Diagram

1

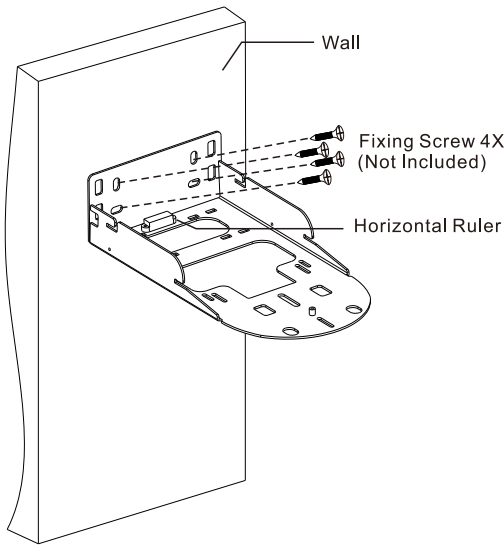


2



B9 / BC9 Camera Hoisting Diagram

1



2

